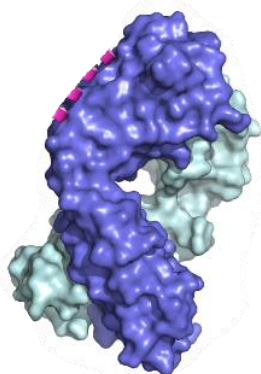


Catalog# BP-50161

## Protein G

### Description:

Protein G is expressed in group C and G streptococcal bacteria. It is a ~60-kDa cell surface protein. It binds to most mammalian immunoglobulins primarily through their Fc regions.



Product Details	
Reactivity	Bind to most mammalian immunoglobulins primarily through their Fc regions.
Source	<i>E. coli</i>
Type	Recombinant
M.W.	~21,600 (Apparent MW by SDS-PAGE: 32,000)
Measurement	A280 of 0.1% solution: 1.0
Isoelectric point (pI)	4.5
Conjugate	Unconjugated
Form	Liquid
Concentration	1 mg/ml
Storage buffer	20 mM Sodium Borate, pH8.0
Storage conditions	4°C for short time, -20°C or -80°C for long time.